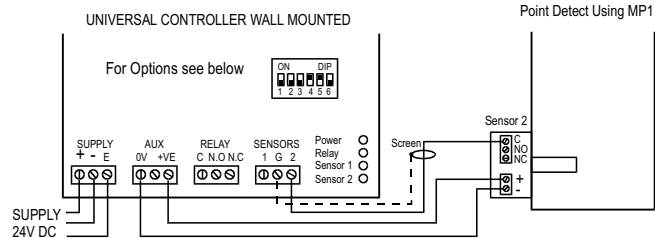
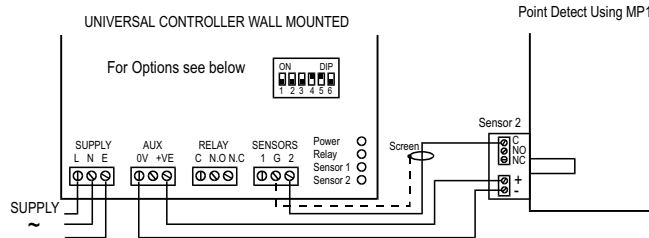
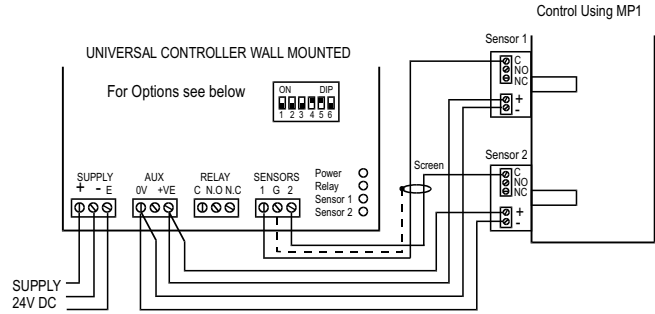
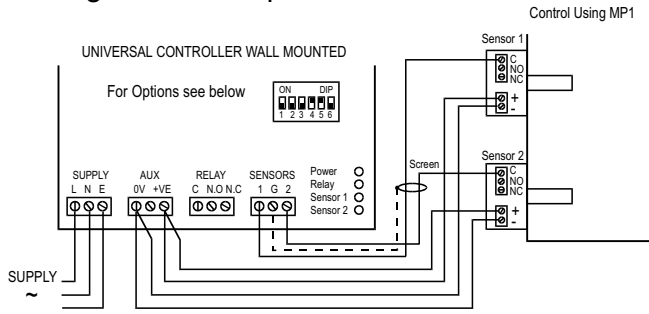




# Universal Controller Wall Mounting Unit UC1

## Wiring and User Option Instructions

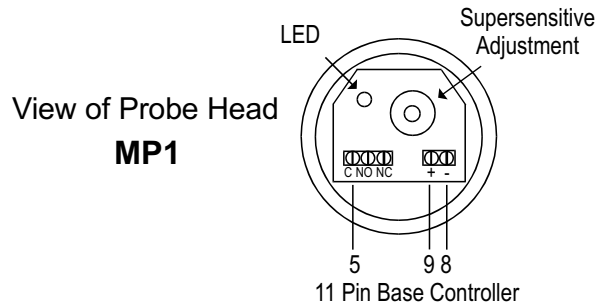
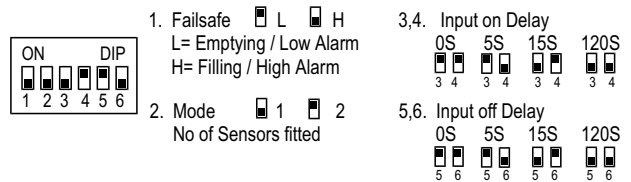


When using MP7 which has a potted 3 core cable, cable colours are as follows Blue = Aux +V, Brown = Aux 0V, Green/Yellow = Sensor

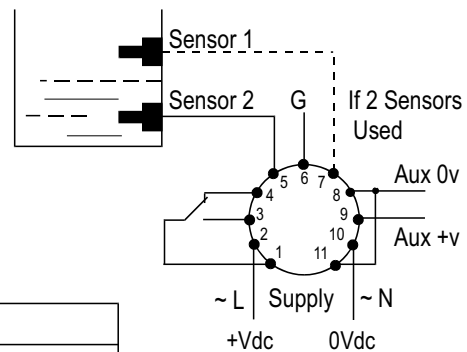
### Technical Data

- Supply:** 230V/115V AC 50Hz  
24V DC reverse polarity protected (selected at works)
- Consumption:** 0.35W @ 12V DC  
1W @ 24V DC  
5W @ 230V DC } all with no aux load
- Inputs:** Single sensor Input 2 Trigger  
Twin sensor Sensor 2 latch, sensor 1 is trigger  
Normally 5V DC  
Active 0V DC
- Max Input Resistance:** 2,000 ohms
- Outputs:** Relay Volt Free  
SPCO contacts 5A @ 230v resistive  
LED'S  
Yellow = Power On  
Red = Relay Energised  
Green = Sensor 1 Active  
Green = Sensor 2 Active
- Operating Temp:** -10°C to +60°C
- Enclosure**  
UC1/P: 50W x 61H x 75D 11 Pin Plug in Base connector 11 Pin relay  
UC1: 130W x 170 H x 85D
- Weight**  
UC1/P: 215 gms  
UC1: 850 gms
- Diagnostic:** Flashing Input L.E.D.'s  
Mode 2 - Input 2 u/s, incorrect wiring/connection or probes reversed  
Mode 1 - Flashes if input is connected to input 1 & active  
Fast flash 3 sec no timer options selected  
Slow flash 1 sec in timing loop.

### Dip Switch/Timer Configurations for Wall Mount Unit



### 11 Pin Base Connections for UC1/P



### Fail to Safe (DIP Switch 1)

Full fail to safe operation selectable via dip switch setting. The following table gives input/output states ignoring any delays.

Input (volt)	Fail to Safe Low	Fail to Safe High
High +5V	Output Relay de-energised	Output Relay energised
Low 0V	Output Relay energised	Output Relay de-energised

Because of continuing development we reserve the right to change the specifications without notice.

### HAWKER ELECTRONICS LTD.

57, The Avenue,  
Rubery Industrial Estate,  
Birmingham, B45 9AL, ENGLAND  
Telephone :+44 (0)121-453-8911 Fax : +44(0)121-453-3777  
e.mail: info@hawker-electronics.co.uk. web: www.hawker-electronics.co.uk



FM 10000



O&M 42  
Issue C Feb 02  
D522.CDR