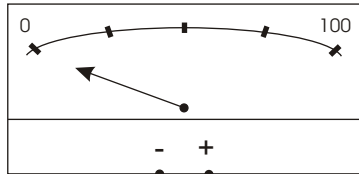




PRESSURE TRANSMITTER / PS2

Wiring diagram for intrinsically safe pressure transmitters type PTX530 ,PTX510 and PTX1830 used with type PS2 power supply, to be read in conjunction with type PS2 installation and setting up instructions.



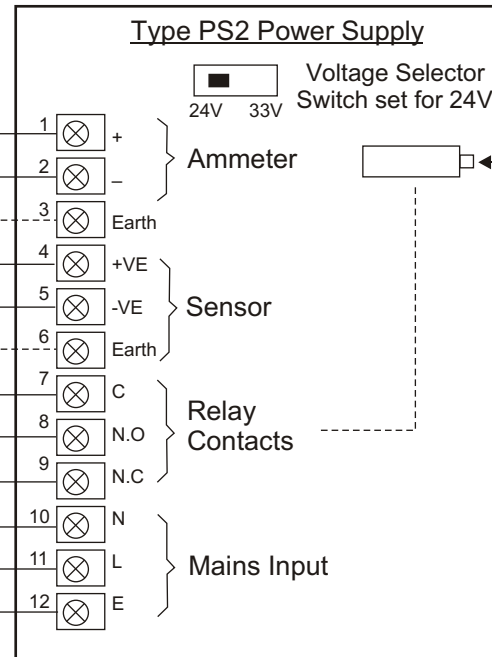
Meter/Trip Amplifier/
PLC/Process Controller

2 - Core Screened
Cable Conductor
size 0.5mm²
Minimum

Red (+VE Supply)
Blue (+VE Output)
Black & Screen



Pressure Transmitter
Type PTX 1830,
Type 530 (as shown) or
Type 510 (Screw-in)



Optional
Relay Trip
Point
Adjustment
Potentiometer
Type PS2/T

Note: Terminals 3, 6 and 12 are internally linked and must be connected to supply voltage earth.

Type TSD2S Transmitter
Cable 2 - Core Screened
& Vented

Note: The PS2 Voltage Selector switch to be set for 24V DC only

This product has been designed and complies to the relevant standards as listed in its certificate of conformity. The installer/user must ensure system compliance
Because of continuing development we reserve the right to change the specification without notice

HAWKER ELECTRONICS LTD

57, The Avenue,
Rubery Industrial Estate,
Birmingham, B45 9AL, England
Telephone :+44(0)121-453-8911 Fax: +44(0)121-453-3777
E.mail: info@hawker-electronics.co.uk



FM 10000



W D 57
B.D. D697.cdr
Issue B
Feb 02